



WAYNE
Combustion Systems™

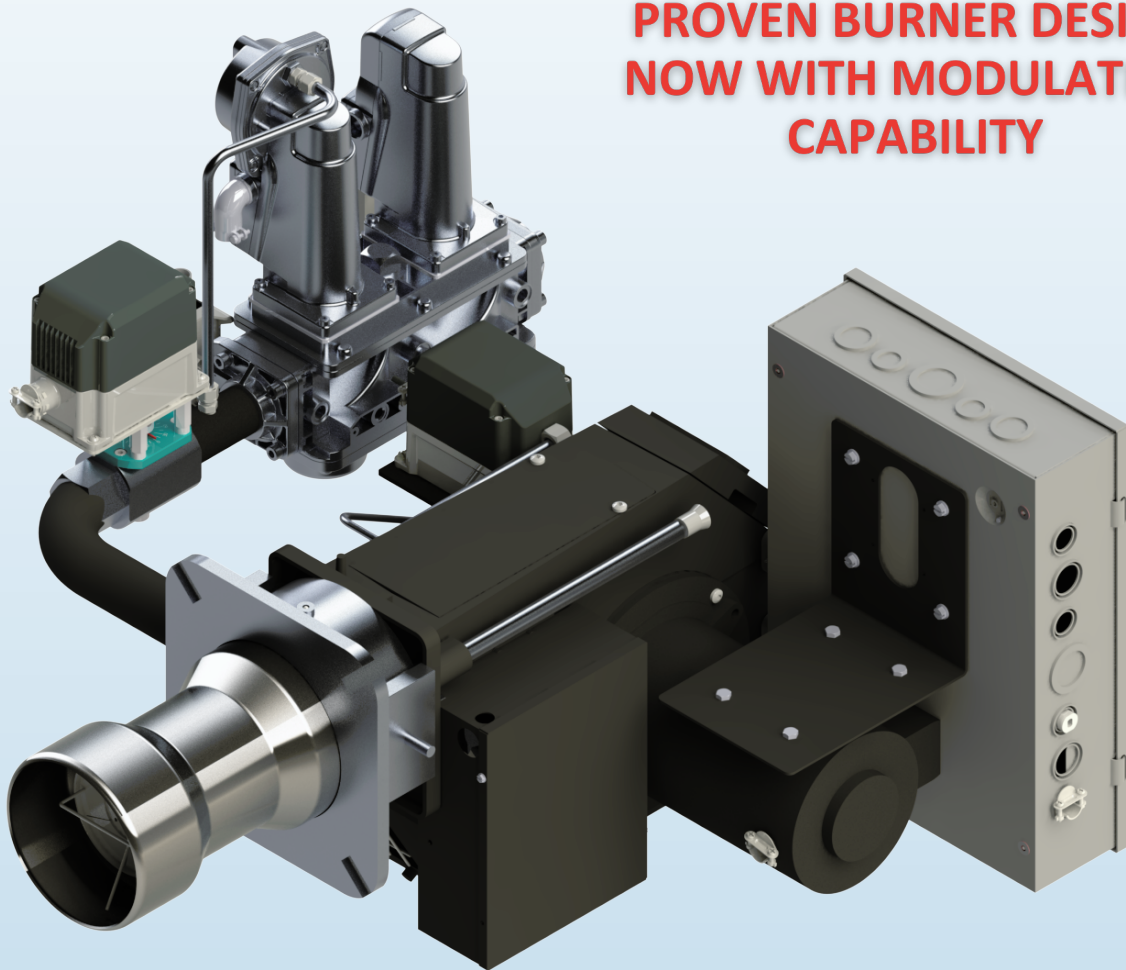
a Scott Fetzer company

NEW!

LC2300M

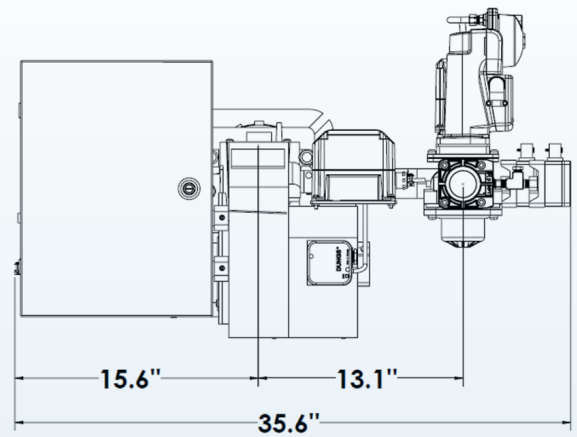
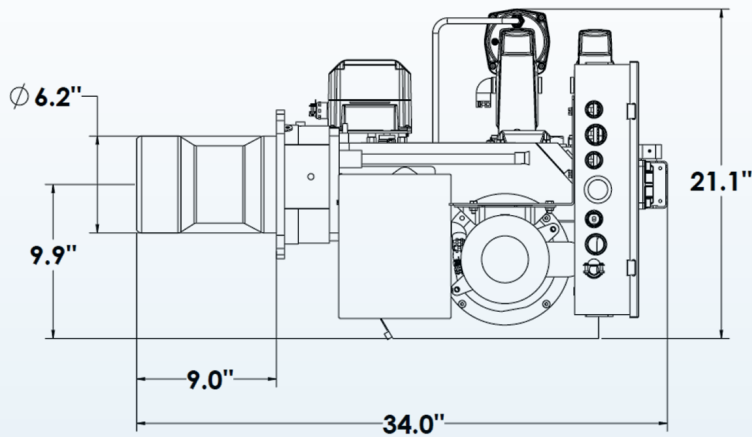
Modulating Gas Burner

**PROVEN BURNER DESIGN
NOW WITH MODULATING
CAPABILITY**



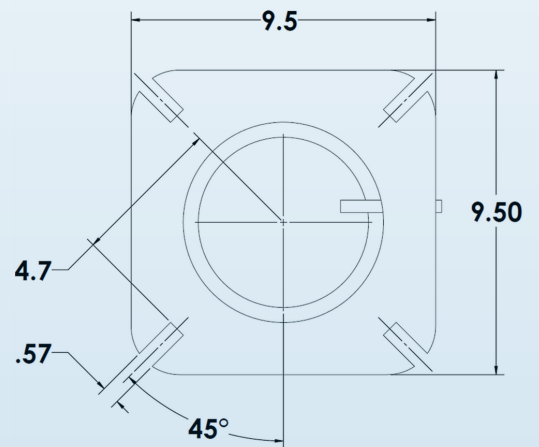
- Full Modulation with Integrated Controls, Valves, and Gas Train
- Firing Rate 70,000 BTU/hr to 2.3MM BTU/hr for 30:1 Turndown
- Linkageless Control System Modulates Both Gas and Air Flows
- Slide Rail Construction for Easy Serviceability
- Control System Readily Available
- Pre-Programmed Firing Rate Curve
- Control Display Can Be Remotely Mounted
- Application Support Available

LC2300M Modulating Gas Burner

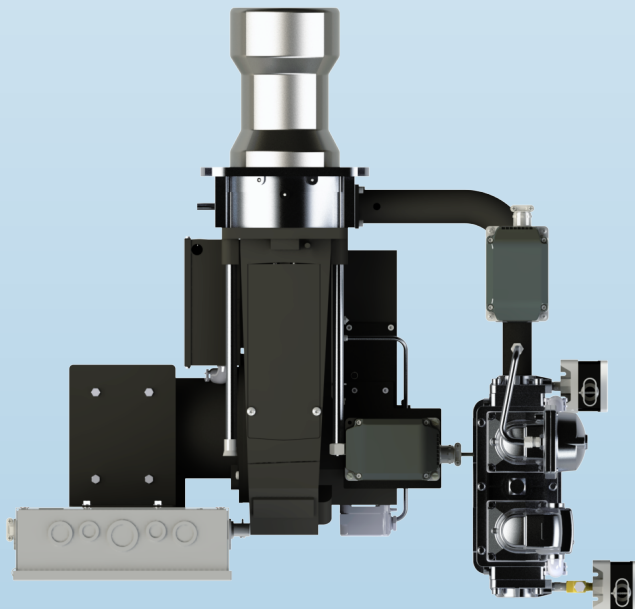


LC2300M Burner Specifications

BTU	70,000 - 2,300,000 BTU/hr
Fuel	Natural Gas or LP
Electrical (Voltage)	120V AC
Air Tube Length(s)	9"
Air Tube Diameter(s)	6.25"
Motor	1/4HP, 3450RPM, 115/208-230V, 60HZ
Combustion Head	Nozzle mix, high retention
Ignition	Direct spark 6,000V ignition source
Flame Sensing	Ionization or UV sensor
Mounting	Cast aluminum flange
Modulating	Yes
Agency Approvals	cUL pending



FLANGE MOUNTING



Applications

- Commercial Boilers
- Commercial Roasters and Ovens
- Industrial Ovens
- Incinerators
- Make-Up Air Units
- Process Heating
- Water Heaters

**WE ARE EXPERTS
AT IMPLEMENTING
INTO YOUR APPLIANCE**